



Engineering **C**onstruction Service

## BARTEC BENKE

YOUR competent partner for safe plants

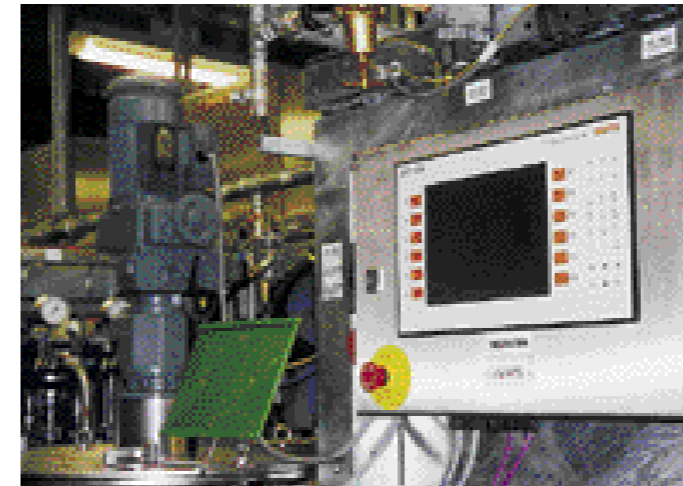


The specialists

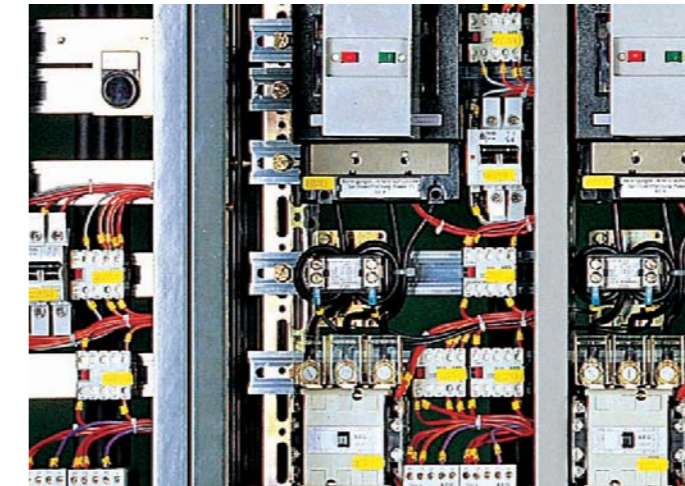
from BARTEC BENKE have many years of experience in plant safety. They create solutions which you can rely on: economical, reliable and for the future.



Heating Technology



Automation Systems



Electrical Engineering



Analyzers and Analyzer Systems

### Production and Procurement

- Automation systems
- Analyzers and Analyzer systems  
Measurement instrumentation
- Instrumentation
- Switch gear solutions
- Installation technology
- Electrical heaters

### Construction/Installation

- Project management
- Site management
- QS/SCC-management
- Instrumentation assembly
- Electrical heaters
- Process analyzer systems
- Industrial resettlement

### Commissioning

- Functional testing
- Start up
- Test runs
- Training
- As-built documentation

### Engineering

- Expertise
- Risk assessment  
Safety concepts  
including documentation
- Budget planning
- System-specific user software  
PLS/SPS, safety-related control
- Basic/detail engineering  
automation systems, instrumentation,  
electric trace heating, analyzers/  
systems, electrical engineering  
CAE/CAD-aided

### After Sales Service

- Maintenance and repair
- Operational reliability  
periodic checks
- Safety service
- Plant optimization
- Seminars/training

BARTEC BENKE has more than 300 specialists, who are ready to give their support and complete commitment to your plant project, based on 40 years of experience world-wide. With BARTEC BENKE you can trust the reliability of a strong partner.

### Complete Packages and Solutions

Our knowledge of production, engineering, installation and maintenance is the basis for competent solutions for your very special problems and fields of application.

### Regional Engineering, Construction and Service Teams

Our regional engineering, construction and service teams always guarantee a personal dialogue with regard to plant planning and realization – quickly and with the shortest routes to decisions.

### Full Service

Specialist knowledge in safety engineering and experienced, committed service personnel are a guarantee for operational reliability and availability of your machine. All-round safety – that's what we understand by full service.





# The **leader** in safety and plant engineering

## **The company**

In the course of almost 30 years, BARTEC has captured a leading position among suppliers of safety engineering – both nationally and internationally. This has been achieved with innovative components and systems, which have been tested according to international standards.

**BARTEC protects people and the environment by the safety of components, systems and plants.**

BARTEC BENKE represents 40 years of experience and specialist knowledge in analytical instruments and analytical systems, in engineering, construction and service – for control and optimization of production processes in plants.

Competence and reliability create the basis of an efficient partnership for:

- Constructors and operators of plants in the fields of
  - Oil refining
  - Petrochemistry
  - Chemistry
  - Pharmacy
  - Environmental protection and energy
- Construction of machines and instruments
- Plant construction/engineering
- Food industry

**BARTEC BENKE is always near to you.**

This is guaranteed by our regional specialist teams, as well as 20 market divisions and more than 30 specialist representatives of the BARTEC group throughout the world.



Company location in Reinbek near Hamburg



Head office of BARTEC in Bad Mergentheim

**BARTEC BENKE**

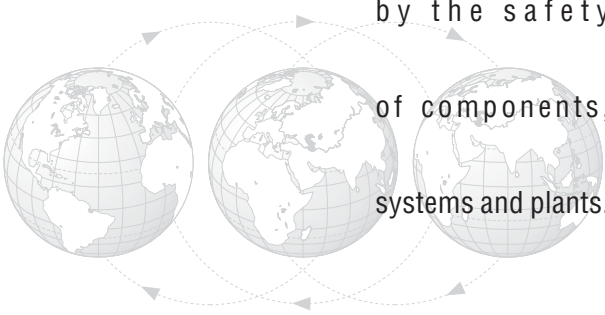
protects people and

the environment

by the safety

of components,

systems and plants.



**BARTEC BENKE** GmbH  
Borsigstraße 10  
D-21465 Reinbek/Hamburg

Phone: +49 40 72703-0  
Fax: +49 40 72703-228

info@bartec-benke.de  
www.bartec-benke.de

**BARTEC BENKE** GmbH  
Berner Straße 53  
D-60437 Frankfurt

Phone: +49 69 50004-0  
Fax: +49 69 50004-199

BueroMitte@bartec-benke.de  
www.bartec-benke.de

**BARTEC BENKE** GmbH  
Borsigstraße 10  
D-21465 Reinbek/Hamburg

Phone: +49 40 72703-0  
Fax: +49 40 72703-395

BueroNord@bartec-benke.de  
www.bartec-benke.de

**BARTEC BENKE** GmbH  
Werkstraße  
D-04564 Böhlen

Phone: +49 34206 605-0  
Fax: +49 34206 605-60

BueroOst@bartec-benke.de  
www.bartec-benke.de

**BARTEC BENKE** GmbH  
Chemiepark Marl  
im Fremdfirmenbaufeld  
Paul-Baumann-Str. 1  
D-45764 Marl

Phone: +49 2365 495-559  
Fax: +49 2365 495-265

BueroWest@bartec-benke.de  
www.bartec-benke.de